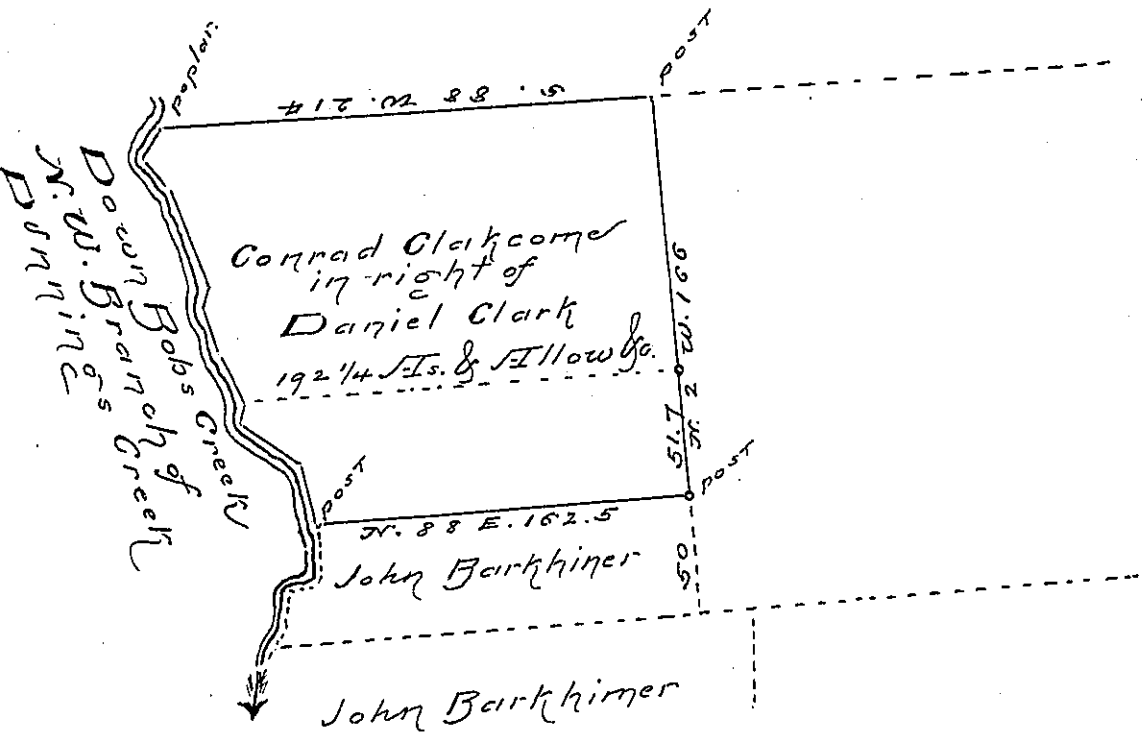


C. 77-134

Courses from the poplar down the Creek to the post.

- S. 39 W. 12
- S. 36 E. 14
- S. 20 E. 46
- S. 18 W. 10
- S. 14 E. 20
- S. 27 1/4 E. 24.1
- S. 22 W. 8
- S. 53 E. 30.4
- S. 15 E. 26 post



Situate on Bobs Creek the North West branch of Dunning's Creek in St. Clair Township Bedford County containing 192 1/4 acres and allowance of six per cent &c. being part of a larger Tract of land originally Surveyed for Daniel Clark on Warrant dated the 1st day of June A.D. 1763.

Surveyed for Conrad Clark come the 16th day of November A.D. 1835.

To
 Jacob Spangler Esq. J. G. Robert Strunk A.S.

IN TESTIMONY that the above is a copy of the original remaining on file in the Department of Internal Affairs of Pennsylvania, made conformably to an Act of Assembly approved the 16th day of February, 1833. I have hereunto set my Hand and caused the Seal of said Department to be affixed at Harrisburg, this
 — second — day of — July — 1896.

James W. Patta
 Secretary of Internal Affairs.